

SPECIALIZED MACHINERY



**NAVY**

**CUSTOMIZED DECK MACHINERY  
AND HANGAR & SHELL DOORS**

**DEFENCE**





# OUR HISTORY REVITALIZES OUR FUTURE

## HISTORY

Industrias Ferri S. A. is a family company founded in 1964.

## PROFILE

Industrias Ferri S. A., located in Vigo – Spain, has specialized in designing and manufacturing of equipment, systems and machinery for all types of vessels, complying with the most rigorous requirements of performance and reliability, confirming our fame as an innovate manufacturer of high quality products.

## STAFF

Our team: 100+ of whom 70% are engineers.

## EXPANSION

In 2013, Ferri acquired Talleres Carral, company focused on winches & windlasses since 1921.

In 2014, Ferri organized the refoundation of Brusselle, the well known Belgium Winches manufacturer.

In 2019, FERRI Systems was created.



NAVY



RESCUE



## U.S.V. VICTORIA

First U.S.V. developed, designed and manufactured in SPAIN:

- Adaptable Technology to any boat model
- Robotics for remote operation of cranes, davits, winches,... and other systems

**FERRI SYSTEMS**, a company specialized in electricity, electronic, software of control and drives provides professional solutions in four different areas:

- Engineering: electrical systems for vessels (diagrams, calculation, switch boards, propulsion, ...)
- Supply of electrical equipment
- Realization of turnkey projects
- Services





## SPECIALIZED MACHINERY

# LAUNCH AND RECOVERY SYSTEM (L.A.R.S.)

We design and manufacture customized LARS:

A-frames, telescopic and articulated booms, cranes, davits, etc for every class of work-boat and rescue boat.

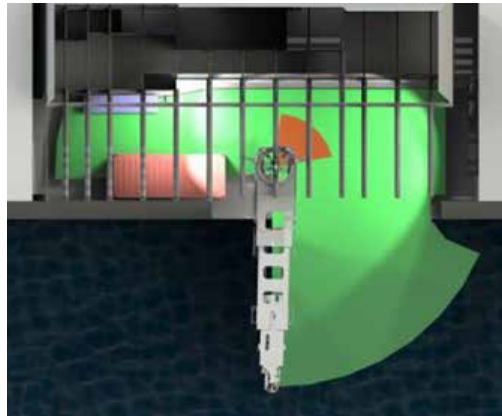
We also design surface equipment to be adapted to the location and working conditions of the boat: military craft, seismographic vessels, oceanographic vessels, offshore support vessel, etc...





# MISSION BAY HANDLING SYSTEM

Equipments designed for the movement of different loads as U.S.V., minisubmarine, rescue boats, work boats, etc..

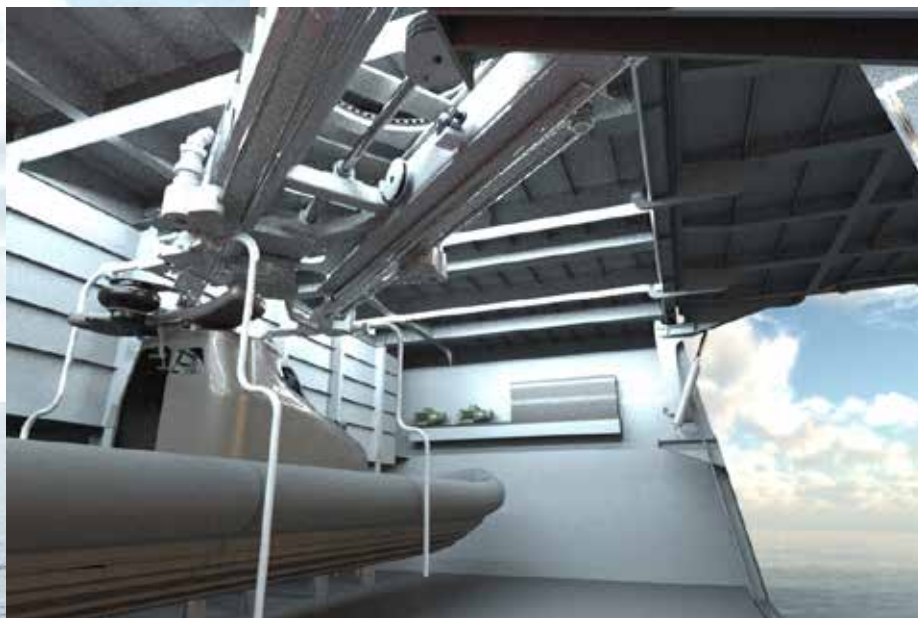


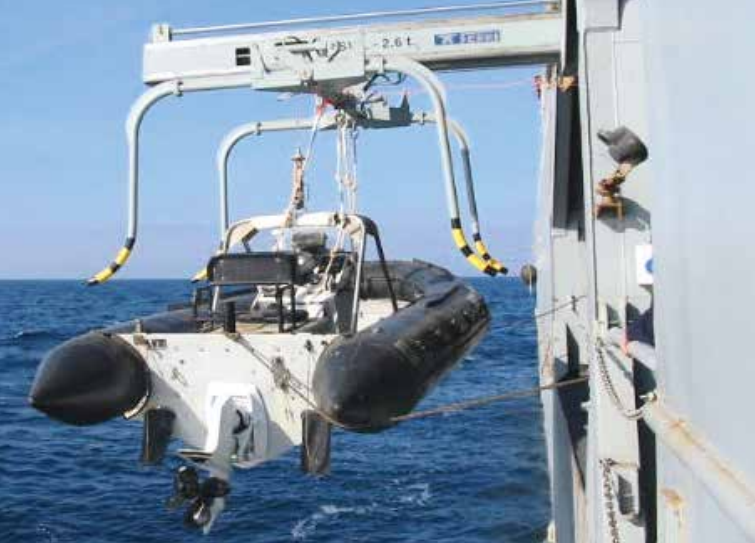


F 110

## SPECIALIZED MACHINERY

- Maximum garage hook coverage
  - Adaptable to different load movements
- CONTAINERS, USV, INTERVENTION BOATS





## SPECIALIZED MACHINERY

### DAVITS

We offer a full range of rescue systems davits for life boat, raft, rescue craft, work boat, intervention and fast rescue craft. Davits with special tools:

- Docking head
- Dumping system and shock absorber
- Stabilized arms
- SOLAS
- Constant tension
- Any climate and sea state
- High speed
- Anti roll and –pitch systems
- Cable tensors
- Stowage cradles
- Towing booms
- Specialized hooks
- Possibility of different materials





## SPECIALIZED MACHINERY

### CRANES

Design, manufacture and testing according to NATO standards.

Highly elastic boom material to minimize weight and geometry.

- We develop cranes for extreme working conditions and sea state.
- Combined use
- Custom developed for the project.
- Possibility of combined SOLAS and lifesaving application
- ATEX
- MOPS
- High speeds





## SPECIALIZED MACHINERY

# CRANES

SPECIAL DESIGN EQUIPMENTS FOR THE SAFE LAUNCH AND RECOVERY OF WORK BOATS AND RESCUE BOATS

Including:

- Shock-absorbing
- Docking head designed for all kind of loads





## SPECIALIZED MACHINERY

### SOLAS CRANES

Handling of supplies and rescue craft in offshore conditions  
Work boat handling, SOLAS, MED, etc





## L.A.R.S. FOR SUBMARINE

- Tender boats and cargo handling
- SOLAS
- Man ridding
- Hydraulic or electric equipments
- Any design integration can be adapted
- Low noise level and vibration





## SPECIALIZED MACHINERY

# ACCESS SYSTEMS

## DINAMIC GANGWAYS FOR PERSONAL ACCESS

Equipment for access or transfer. Custom-made for each vessel taking into account space, placement, maneuverability, size, and performance in accordance with working conditions.





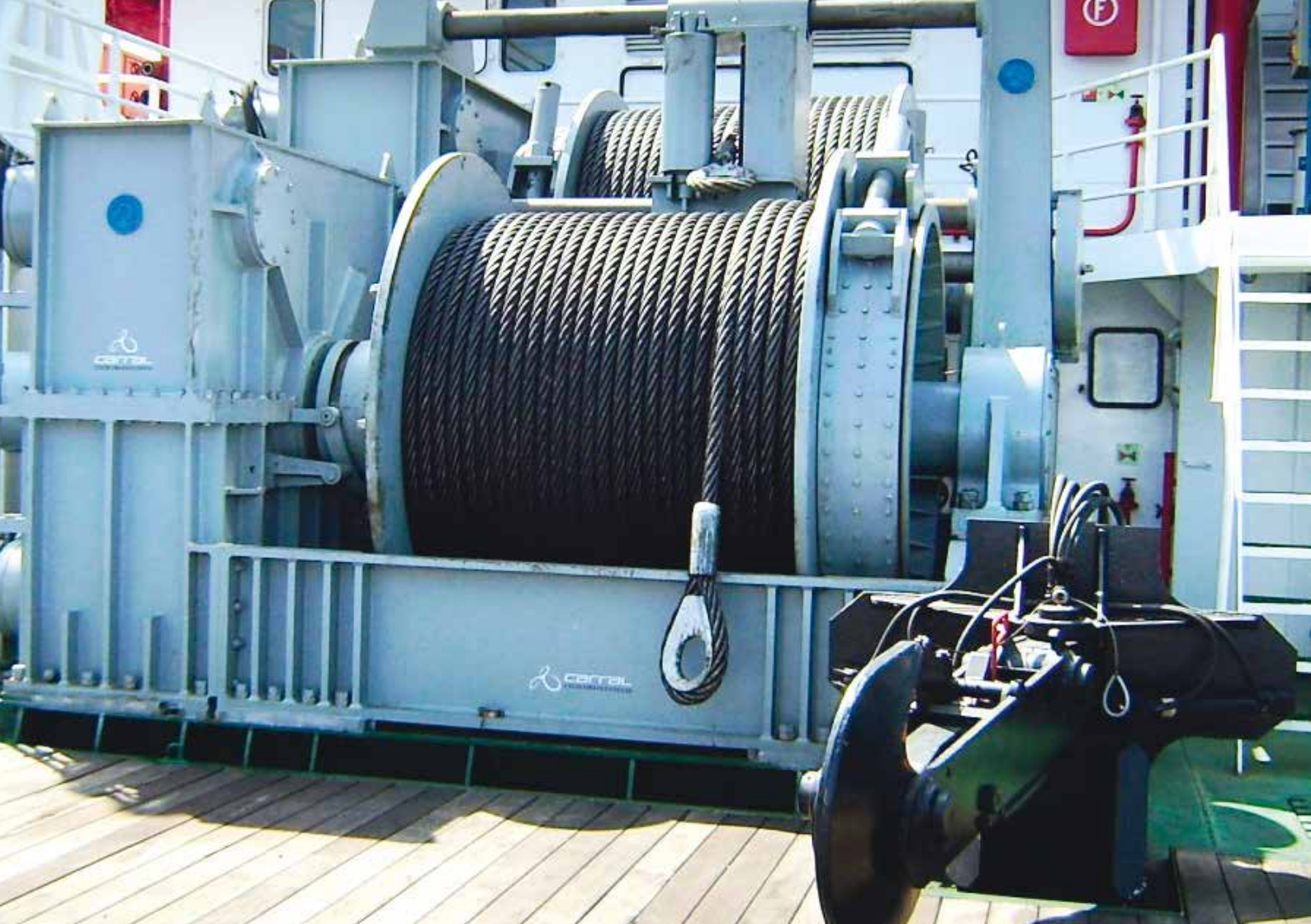
# WINCHES

## MOORING AND ANCHORING WINCHES

Canadian Corvettes project

## WINCH SPECIAL APPLICATION

- Winch Status display and system parameters setup
- Pull indicator systems, analogic and digital
- Fishing net control integration to optimize net aperture parameters
- Winding systems mechanical or motor driven
- Active Heave Compensation (AHC)
- Active Wave Compensation (AWC)
- Multi-winch synchronisation
- Man ridding
- Artic and extreme load temperature winches
- ATEX
- Constant tension



CBFOL

CBFOL

## SPECIAL WINCH SYSTEMS

We also design and manufacture cargo, mining, underwater and construction, umbilical, ROV, winding winches, boom & stowing & reels.

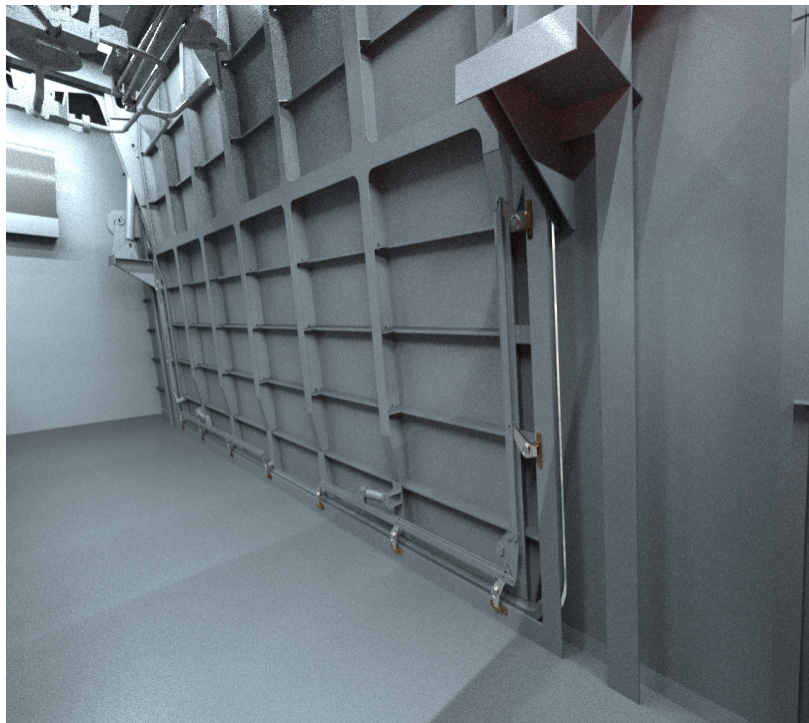




## SPECIALIZED MACHINERY

# DOORS

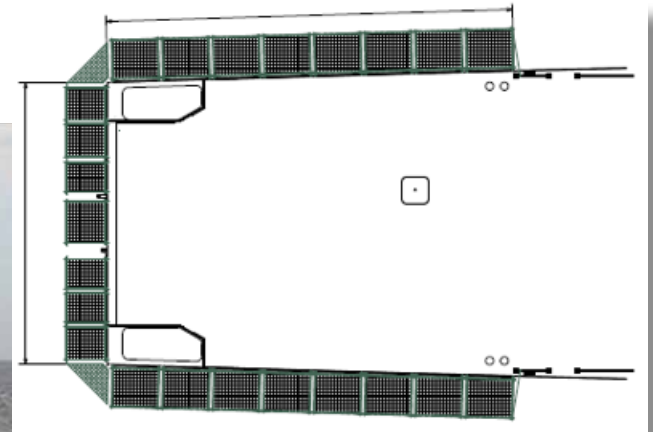
GARAGE DOORS  
SIDE DOORS



# COLLAPSIBLE PANELS SECURITY NETS

Mechanized

Manual

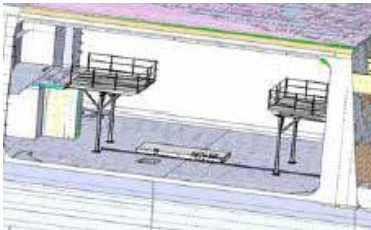


# SPECIAL LOAD HANDLING

Customized load handling systems

Load transfer system

Weapons – Ammunition handling systems

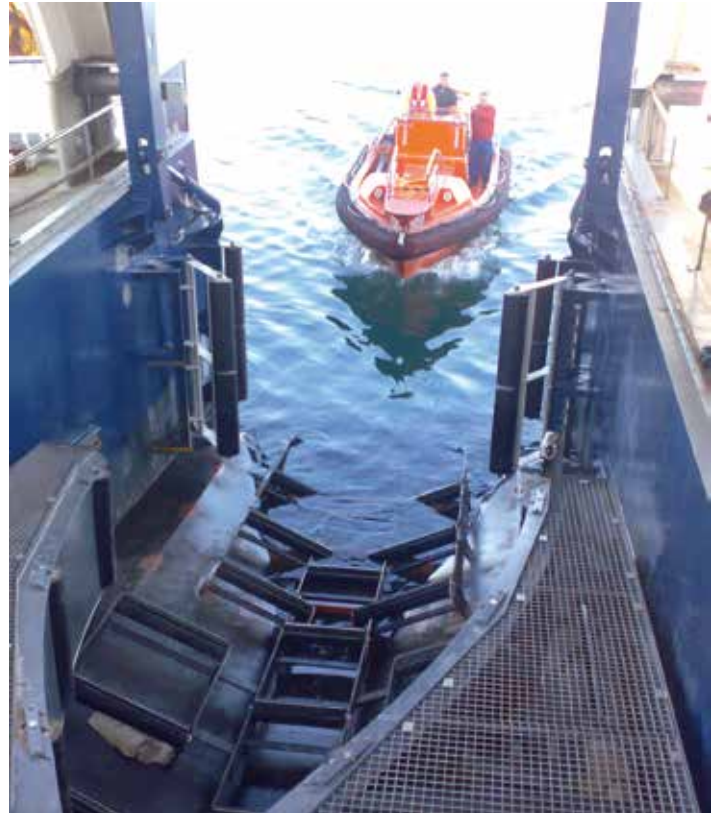




NORDSØEN  
ESBJERG

## STERN RAMP FOR BOAT

Total on-board integration. Very fast launch and recovery without participation of crew on mother-ship





# DEFENCE

## MACHINES, ROBOTICS, CONTROL...

### FERRI DEMOLITION ROBOT S2500

DEFENCE · FIRE FIGHTING · PROTECTION · SECURITY

A reliable and efficient equipment, ideal for carrying out multiple tasks, even in remote areas and harsh environments

### SPECIALIZED MACHINERY

Tools







Industrias FERRI S.A. is based in an industrial environment with access to one of Spain's most important sea ports, Vigo.

A Pasaxe 81, Vincios, Gondomar | 36316 Vigo (SPAIN)  
T 34 986 468 201 | [info@ferri-sa.es](mailto:info@ferri-sa.es) | [www.ferri-sa.es](http://www.ferri-sa.es)



**FERRI**



**CARRAL**  
100 YEARS 1921  
2021

100% recycled paper with high opacity. ColorLok technology . Chlorine free. FSC/ FSC-C015522 certified, 100% recycled, Ecolabel, Blue Angel - Cradle-to-Cradle Certified ® bronze safe, circular and responsibly manufactured product





[www.ferri-sa.es](http://www.ferri-sa.es)

A Pasaxe 81  
Vincios, Gondomar  
36316 Vigo (SPAIN)

[info@ferri-sa.es](mailto:info@ferri-sa.es)  
T 34 986 468 201



SPECIALIZED MACHINERY

